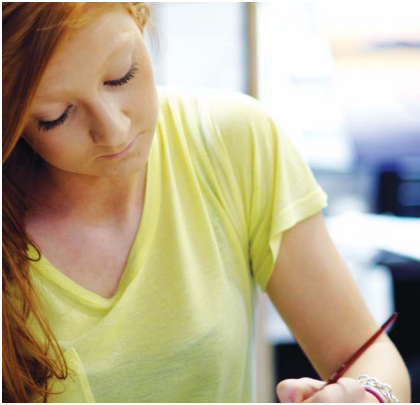




# School Development Plan



► Executive Summary June 2013

VALUING PEOPLE SUPPORTING PERSONAL BEST

# Valuing People

---

The people who study and work at our college are our greatest asset.

We want them to enjoy coming to Shelley and to gain fulfilment from the activities they undertake. We will support them to feel good about themselves and to live rich and productive lives. We want them to see the world as an exciting place that is full of opportunity.

Everybody and anybody who can support our values is welcome at Shelley College. We believe respect and tolerance for other people is fundamental to a happy and successful time at school and in the future.

We value our relationship with the wider community, especially our parents, and will try our best to make their experience of the college a warm and positive one.

# Supporting Personal Best

---

We are ambitious for our students and staff meaning we want them to become the very best they can be.

We ask that everybody tries their absolute best at any given activity, given their personal circumstances. We recognise that this may mean very different outcomes but we choose to value effort above other measures.

We aim to help our students gain the attitudes, skills and knowledge they need to enjoy happy and successful lives in the future.

We will celebrate personal best in a wide variety of activities and want all members of the community to achieve their personal, meaningful goals.

# Our School Development Plan

---

Our school development plan provides the description of how we will try to improve five pillars, each with its own strong values and aims

**Leadership** that helps get the best out of other

**Infrastructure and Environment** to create a positive and supportive working environment for all

**Teaching and Learning** that helps students achieve their best

**Happy and successful students** creating the right culture and structures for students to achieve their best

**Community & Communication** working with the community to create a college all can value and feel proud of

# Our Priorities for 2013-14

---

Drawing together the priorities from each pillar has led us to focus on these key areas for the academic year 2013-14:

- Develop excellent communication throughout the college
- Give staff at all levels of the organisation a greater say in how the college is run
- Help students to develop leadership skills and experience
- Help leaders achieve personal best
- Build effective working relationships at all levels of the organisation, to help all staff achieve their best
- Share our best practice with others, learn about best practice from elsewhere
- To increase the transparency of decision making amongst staff
- To further develop inspirational and creative teaching to engage students in their learning
- To provide excellent coaching and support for teachers
- To give staff and students a greater say in their targets
- Further develop a culture where all students are encouraged to achieve personal excellence
- Further develop a programme that equips students with skills and knowledge that support success in their adult lives
- Create an ethos where staff and students treat each other with respect
- Further improve the school environment
- Enhance pastoral and curriculum links to improve behaviour and levels of engagement
- Celebrate our achievements
- Communicate our values clearly.

A more detailed plan is available, covering the strategies and key performance indicators we will use to measure our success in implementing the plan.

## Next steps

---

We will seek the views of all members of the community and develop the plan further, before governors decide whether to formally adopt it in September 2013.

We will then keep everybody informed of our progress and are keen to involve the whole community in putting the plan into action.

Please feel free to get in touch if you have any comments or would like to get involved.

**Your views are welcome in writing. Please send your comments either:**

By e-mail to: [consultations@shelleycollege.org](mailto:consultations@shelleycollege.org)

or by post: **FAO Mrs. M. Worsley**

**Shelley College**

**Huddersfield Road**

**Huddersfield**

**West Yorkshire**

**HD8 8NL**